

Small and Versatile: 1/3-inch Full-HD MOS Integrated Pan-Tilt/Cameras with Production Quality HD/SD Video

HD Integrated Camera
AW-HE50S **NEW**
[SDI Model]

HD Integrated Camera
AW-HE50H **NEW**
[HDMI Model]

Wireless Remote Controller
AW-RM50
*Two AA size batteries required
(batteries not included)

Multi-interface Cable (option)
AW-CA20T6



HD 1080/50i, 720/50p

SD 576/50i

1/3-inch Full-HD MOS Sensor with 18x HD Optical Zoom & 10x Digital Zoom

Innovative Features Deliver Realistic, Production Quality HD Video

Dynamic Range Stretch (DRS)

The gamma curve and knee slope are optimized to match the contrast of each pixel in real time. This increases the dynamic range without affecting the normal pixels.



DRS OFF: With the iris expanded, this blown highlight appears on the blackboard
DRS OFF: With the iris contracted, a blocked shadow appears on the figure
DRS ON: Both highlights and shadows are clearly visible on the blackboard

Hybrid (2D/3D) Noise Reduction

The innovative Hybrid (2D/3D) Noise Reduction function also suppresses afterimages, even in difficult lighting conditions.



Without Noise Reduction
Some noise is evident when gain control is turned up
3D Noise Reduction Alone
Afterimage and some loss of resolution is seen
The Hybrid (2D/3D) Noise Reduction
Clearer images in difficult conditions

Flesh Tone Mode

Flesh Tone Mode produces a more pleasing and realistic picture.

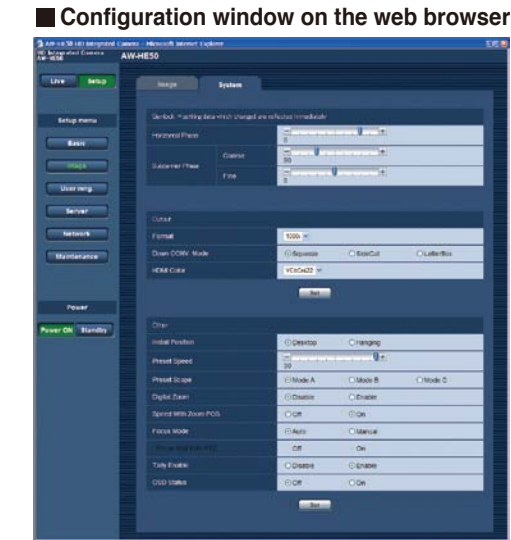


Flesh Tone Mode:OFF
Flesh Tone Mode:ON

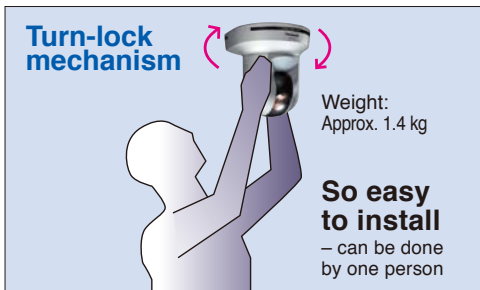
●The effectiveness can be affected by lighting, etc.

Setting camera menus with a PC

- Camera menus can be set up via a web browser by connecting the AW-HE50S/H to a PC.



Quick integration, thanks to simple connections, IP control, and included Turn-lock mount



■AW-HE50 Main Specifications

	AW-HE50S (SDI Model)	AW-HE50H (HDMI Model)
Image Elements	1/3-inch Full-HD MOS	
Lens	18x HD Zoom Lens F1.6 to 2.8 (=4.7 to 84.6 mm, 35 mm conversion: 36.9 mm to 664.5 mm)	
Focus	Auto/Manual switchable	
Horizontal Resolution	850 TV Lines (Center)	
Minimum Illumination	3 lx (ISO IRE, F1.6, +36 dB)	
SN	54 dB	
Gain Selection	0.3, 6.9, 12, 15, 18 dB/AGC 0 dB, 6 dB, 12 dB, 18 dB (Integral mode)	
Shutter Speed	Step 1/100, 1/250, 1/500, 1/1000, 1/2000, 1/4000, 1/10000 Syncro-scan 60.24 Hz to 646.21 Hz	
Gamma	OFF, Low, Mid, High, Cinema	
White Balance	AWB A, AWB B, ATW	
Variable Chroma Levels	7 levels	
Scene Files	Full-Auto, Manual	
Color Bar	Full-Bar	
Output Format	HD: 1080/50i, 720/50p SD: 576/50i	
Video Output	HD/SD-SDI HD/SD analog component* Composite*	HDMI HD/SD analog component* Composite*
Interface	LAN RS-422	10BASE-T/100BASE-TX, IPv4
Synchronization System	Internal/External synchronization (BBS)	Internal synchronization
Rotation Range	Pan: -175 to +175 degrees, Tilt: -30 to +90 degrees	
Rotation Speed	Over 90 °/s (at maximum)	
Noise	NC35 (Moving normally), NC40 (When Preset recalled)	
Stopping Accuracy	PAN/Tilt ±0.3 °	
Power Supply	DC12 V ±10 %, 1.3 A	
Operating Temperature	0 °C to +40 °C	
Operating Humidity	20 % to 90 % (no condensation)	
Dimensions (W x H x D)	160 mm x 178 mm x 166 mm [TBD] (excluding the cable cover and mounting brackets)	
Weight	Approx. 1.4 kg	
Standard Accessories	Mounting Bracket (for table or ceiling), Mounting Bracket (for main unit), Mounting Screws, AC Adaptor, Power Cable, Cable Cover	

●Be sure to use the included AC adaptor and power cable

*Breakout cable required

■AW-HS50 Main Specifications

Video Format	HD (1080/59.94i, 1080/50i, 1080/23.98PsF, 1080/24PsF, 720/59.94p, 720/50p) SD (480/59.94i, 576/50i)	BKGD	Wipe/DVE pattern Transition Type Selectable Materials	Wipe x 13 Cut, Mix, Wipe (including DVE) Black, White, CBGD, FMEM1, FMEM2
Video Processing	Y/Cb/Cr, 4:2:2 10 bit (8 bit for FMEM) RGB, 4:4:4 8 bit	KEYER	Number of Keys Key Type	1 Linear key, Luminance key, Chroma key
M/E	1 M/E Standard: 4 SDI inputs (SDI-IN 1 to 4) Standard: 1 DVI-D output (DVI-IN) XGA (1024 x 768), WXGA (1280 x 768), SXGA (1280 x 1024), WSXGA+ (1680 x 1050), UXGA (1600 x 1200), WUXGA (1920 x 1200) Vertical frequency: 60 Hz 1080/50p, 1080/59.94p	PinP	Transition Type BUS Transition	Mix Yes (Mix)
Video Input	Standard: 2 SDI outputs (SDI-OUT1 to 2 each, 2 output distribution for SDI-OUT1) Standard: 1 DVI-D output (DVI-OUT) XGA (1024 x 768), WXGA (1280 x 768), SXGA (1280 x 1024), WSXGA+ (1680 x 1050), UXGA (1600 x 1200), WUXGA (1920 x 1200) Vertical frequency: 60 Hz 1080/50p, 1080/59.94p	AUX BUS	Selectable Materials	SDI-IN1 to 4, DVI-IN, CBGD, BLACK, FMEM1, FMEM2, PGM, PW, KOUT, CLN, MV
Video Output	Standard: 2 SDI outputs (SDI-OUT1 to 2 each, 2 output distribution for SDI-OUT1) Standard: 1 DVI-D output (DVI-OUT) XGA (1024 x 768), WXGA (1280 x 768), SXGA (1280 x 1024), WSXGA+ (1680 x 1050), UXGA (1600 x 1200), WUXGA (1920 x 1200) Vertical frequency: 60 Hz 1080/50p, 1080/59.94p	Input Function	BUS Transition Frame Synchronizer Freeze Dot by Dot Video Processing Up-converter	SDI-IN1 to 4, DVI-IN (DVI-IN is always-on) SDI-IN1 to 4, DVI-IN SDI-IN1 to 4 SDI-IN3, IN4
Frame Memory	2 channels The image data in the Frame Memory is stored even when the power is off. Video processing for the Frame Memory is 8-bit. OSD, Frames, Labels, Tally indications, camera setting information, and Audio Level Meters for MultiViewer are not stored in the Frame Memory.	MultiViewer		Single Screen Display Labels, Tally indication, Split-screen (the screen may be split into 4, 5a/5b, 6a/6b, 9 and 10a/10b sections) MV frames, Labels, Tally indications, camera setting information, and Audio Level Meters are not shown on SDI-OUT1.
Memory Function	Wipe Reset, PinP Preset Effect Dissolve Function	Output Function		Single Screen Display SDI-OUT2, DVI-OUT (unshown on SDI-OUT1)
Interface	LAN 10BASE-T/100BASE-TX (for IP control) GPI INPUT x 5 channels GPI OUTPUT x 7 channels			SDI-OUT1 (unshown on SDI-OUT1) The MultiViewer frames are cleared when the borders between the OSD and the split-screen of MultiViewer cross.
Power Supply	DC12 V ±10 %, 2.5 A [TBD]	OSD		SDI embedded audio 1 ch, 2 ch
Operating Temperature	0 °C to +40 °C			
Operating Humidity	10 % to 90 % (no condensation)			
Dimensions (W x H x D)	210 mm x 65 mm x 177 mm [TBD] (excluding protrusions)			
Weight	Approx. 1.4 kg [TBD] (without options)			
Standard Accessories	AC Adaptor, Power Cable			

●Be sure to use the included AC adaptor and power cable

●Specifications and functions are subject to change without notice.

●The image on the screen is a composite image. ●Composite images, photographs, and illustrations are included for reference use only.

Panasonic

<http://panasonic.net/pss/broad/>

[Countries and Regions]

Argentina	+54 1 308 1610	Italy	+39 02 67 88 449	Russia & CIS	+7 495 980 42 06
Australia	+61 2 9986 7400	Jordan	+962 585 9801	Saudi Arabia	+966 1 465 0709
Austria	+49 (0)611 235 401	Kazakhstan	+7 3272 980 891	Singapore	+65 6270 0110
Bahrain	+973 252290	Korea	+82 2 2106 6666	Slovak Republic	+421 (0)2 52 92 14 23
Belgium	+32 (0)2 481 04 57	Kuwait	+965 481 2123	Slovenia, Croatia, Bosnia, Macedonia	+44 (0)20 76 63 36 57
Bulgaria	+359 2 946 0786	Lebanon	+961 1 216827	South Africa	+27 11 313 1400
Brazil	+55 11 3889 4035	Malaysia	+60 3 5549 5422	Spain	+34 (93) 425 93 00
Canada	+1 905 604 5010	Mexico	+52 5 498 1600	Sweden	+46 (8) 680 26 41
China	+86 10 6515 8828	Montenegro, Serbia	+381 11 222 7100	Switzerland	+41 (0)41 259 96 32
(Hong Kong)	+852 2313 0888	Netherlands	+31 73 64 02 5777	Taiwan	+886 2 2227 6100
Czech Republic	+420 238 032 552/511	New Zealand	+64 9 272 0100	Thailand	+66 2 731 8888
Denmark	+45 43 20 08 57	Norway	+47 67 91 78 00	Turkey	+90 216 578 3700
Egypt	+20 2 23938151	Pakistan	+92 5370320 21	U.A.E.	+971 4 282201
Finland, Latvia, Lithuania, Estonia	+358 (9)521 52 53	Panama	+507 229 2955	Ukraine	+380 44 4903437
France	+33 (0)1 49 46 43 59	Peru	+51 145 29470		+380 44 4903438 [ext. 112]
Germany	+49 (0)611 235 401	Philippines	+63 2 633 6162		+44 (0) 1344 70 69 20
Greece	+30 210 96 92 300	Poland	+48 (22)338 1100	U.K.	
Hungary	+36 (1)362 60 60	Portugal	+351 21 425 77 04	U.S.A.	+1 201 348 5300
Indonesia	+62 21 385 9449	Puerto Rico	+1 787 750 4300		+1 800 528 8601
Iran	+98 212 2271463	Romania	+40 21 211 4855	Vietnam	+84 8 38370280

AW-JEB50-2

Panasonic
ideas for life

PRELIMINARY 50 Hz 4/2010

HD Integrated Camera **AW-HE50S/H**
Compact Live Switcher **AW-HS50**
Remote Camera Controller **AW-RP50**

50
Series

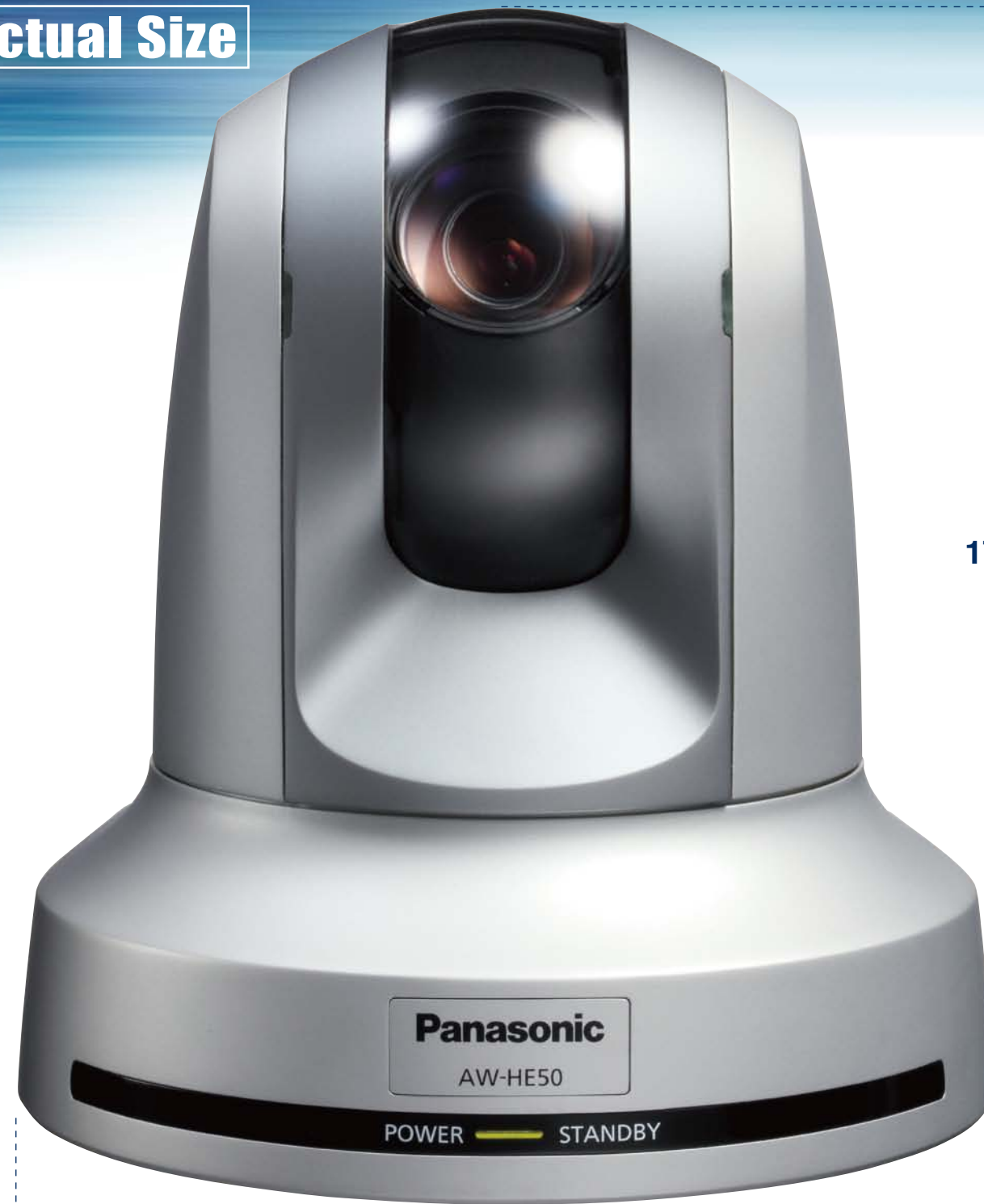
The Compact New 50 Series:
Production Quality Video
with IP Network Control

HD Integrated Camera
AW-HE50S/H

Remote Camera Controller
AW-RP50

Compact Live Switcher
AW-HS50

Actual Size



■Rear
AW-HE50S



AW-HE50H



Small and Powerful:
An Easy-to-Use
Camera Controller
with Great Features

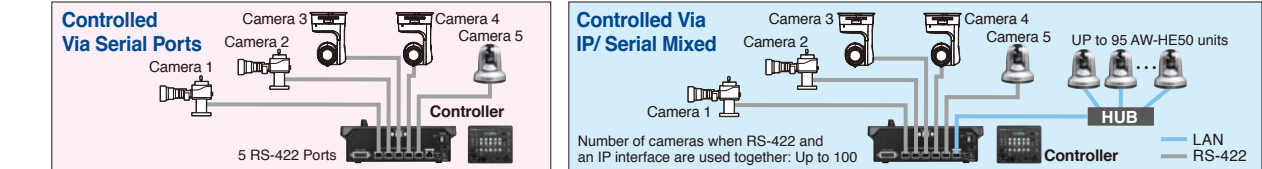
Remote Camera Controller
AW-RP50 **NEW**

Simple to connect and operate,
with both IP and Serial control functions

- Up to a hundred AW-HE50S/H units can be controlled via IP connections when using Ethernet hubs.
- IP addresses are automatically assigned to the AW-HE50S/H or AW-HS50 by the Automatic IP Address Setup function.
- One remote camera can be controlled simultaneously by up to five AW-RP50 units via an IP connection. Various settings for the AW-RP50 can be configured with a PC (configuration software supplied).
- IP-control performance depends on network conditions.
- Video signals cannot be transmitted via IP.

Serial Control also Supported

- Up to 5 existing Panasonic pan-tilt heads*, integrated cameras** and box cameras*** such as the AW-HE50S/H, etc. can be linked using the serial control (RS-422 protocol).
- * Compatible models: AW-PH405, AW-PH400, AW-PH360, AW-PH650 ** Compatible model: AW-HE100
- *** Compatible models: AK-HC1800, AK-HC1500, AW-HE870, AW-HE860, AW-E750, AW-E655, AW-E650, AW-E350



Linking the AW-HS50 to IP control enables
highly efficient and stress-free operations

- The camera setting information (such as iris and gain) acquired by the unit is displayed through the AUX output of the switcher or on the split-screen of MultiViewer.
- Acquires the ON AIR tally information of the switcher and lights the tally LED on the panel.
- Bus images can be changed by linking them to the camera selection (control bus targets: AUX, PVW, PinP, KEY-F).
- The switcher's MultiViewer screen can be changed to the camera image full screen with a one-touch button operation.
- *Control bus target: AUX only
- Parameters such as the PinP position of the switcher can be changed with the pan/tilt lever.

■AW-RP50 Main Specifications				
Remote Camera Control	Protocol	IPv4,RS422 (Panasonic AW series protocol)	LAN TO PAN/TILT HEAD	10BASE-T/100BASE-TX (for IP control)
	Connection	Serial : Up to 5 cameras IP : Up to 100 cameras	RS422 (for Serial control)	RJ45 x 1 RJ45 x 5
Adjustment functions	Pan/Tilt	Joystick (Seesaw Switch), Focus, Iris, Gain, Pedestal, Shutter, Detail, White Balance (Auto, Adjust R/B Gain), Black Balance (Auto, Adjust R/B Pedestal), Switch scene files	TALLY/GPI	TALLY INPUT x 5 channels GPI INPUT x 4 channels GPI OUTPUT x 4 channels
	Operating Temperature	0 °C to 40 °C	Operating Humidity	10 % to 90 % (no condensation)
Switcher Control	Connection	IP-1	Power Supply	DC12 V ±10 %, 0.5 A [TBD]
	Supported Switcher	AW-HS50	Dimensions (W x H x D)	210 mm x 65 mm x 177 mm [TBD] (excluding protrusions)
Linkage	Camera Send, Tally Receive, Switcher BUS selection		Weight	Approx. 1.1 kg [TBD] (without options)
	Pan/Tilt (Joystick)(PinP positioning etc...)		Standard Accessories	AC Adaptor, Power Cable

● Be sure to use the included AC adaptor and power cable

Full rack size with the AW-RP50 and AW-HS50 positioned alongside each other



Small and Professional:
A High-Performance
HD/SD Live Switcher
with Built-in MultiViewer

Compact Live Switcher
AW-HS50 **NEW**

5 inputs and 3 outputs

- Standard features include 5 inputs (4 HD/SD-SDI, 1 DVI-D) and 3 outputs (2 HD/SD-SDI, 1 DVI-D).

MultiViewer display functionality
comes installed as standard

- The built-in MultiViewer can display up to ten image windows at one time on a single monitor, including program, preview, inputs, and more!



Audio Level Meter Display Function

- Embedded audio levels of SDI inputs can be displayed. (1 ch, 2 ch)

Bus Transition Functions

- Cut and Mix transitions are available through AUX bus and PinP bus.

Frame Synchronizers on All Inputs

- Frame Synchronizer is embedded in all inputs. This enables asynchronous video signals to be switched without glitches. (SDI-IN1 to 4 10 bit, DVI-IN 8 bit)

More Powerful Features

- 2 Switchable Up-converters. (SDI-IN3,IN4)
- Color Correction on SDI Inputs (SDI-IN1 to 4) for convenient matching of video sources.
- Dot-by-Dot feature on 4 inputs (SDI-IN1 to 4) enables insertion of SD images into HD frames with virtually no image distortion.
- 13 wipe patterns, plus PinP, Chroma/Linear Key, Aux Bus.

HD	1080/59.94i, 1080/50i, 1080/23.98PsF, 1080/24PsF, 720/59.94p, 720/50p
SD	480/59.94i, 576/50i

